



# Redistricting

## Goal of project:

- Maps were created for each of the fourteen existing Illinois House Districts that had a Latino majority at time of their creation after the 2010 census.
- The goal of this map exercise was to maximize Latino representation without regard to existing boundaries.
- This will allow us to understand the maximum number of Latino-majority districts that could be drawn.

# Illinois House Districts with Latino Majority Populations, Showing Current and Max Boundaries

Data and Mapping by Jim Lewis and Rob Paral  
Rob Paral and Associates

January 2021

## Demographic Background

### Population

- Illinois Population (2015-2019): 12,770,631
- Latino Population: 2,186,387
- Latino Percent: 17%

### State House Districts

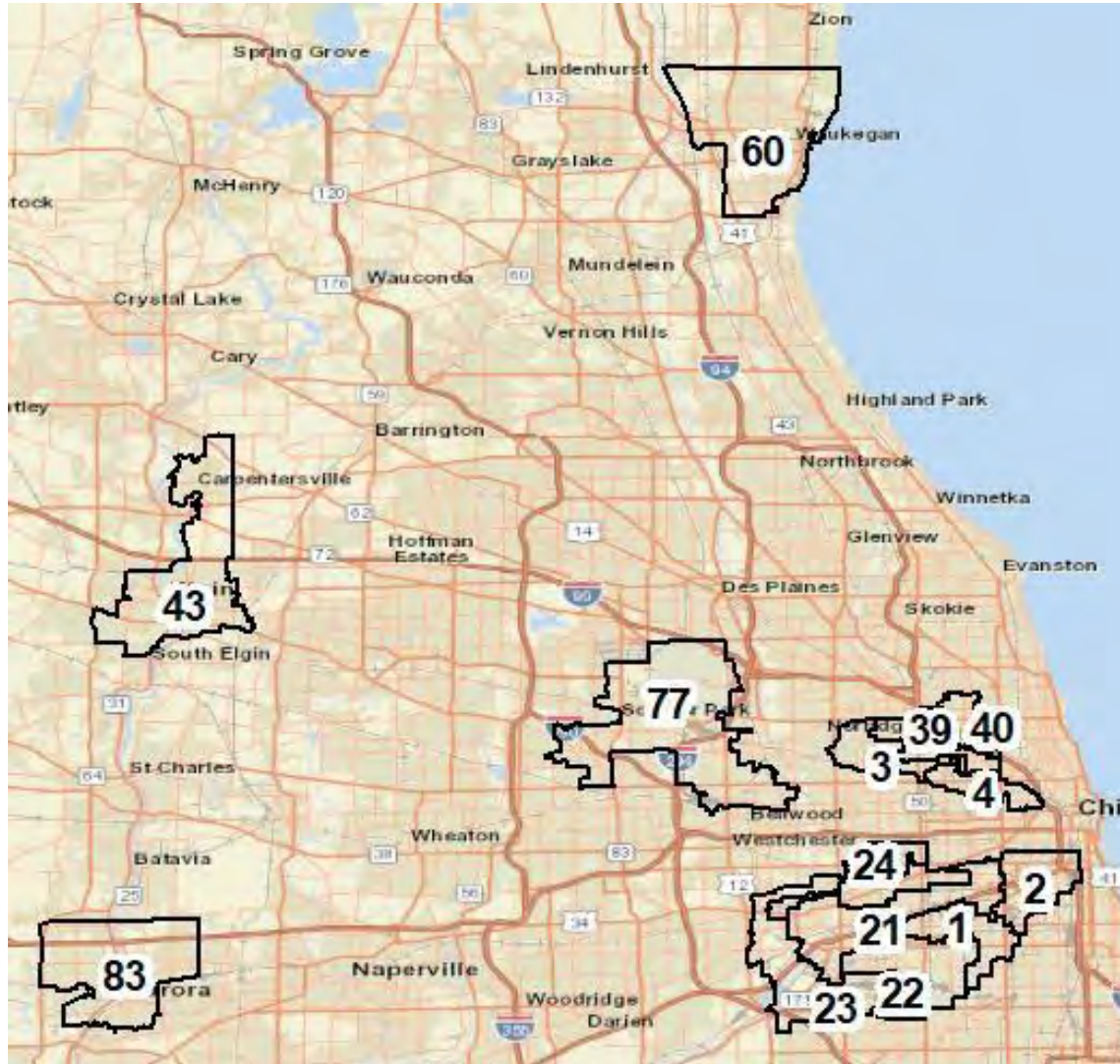
- Illinois House Districts: 118
- Latino-Majority Districts (2015-2019): 12
- Latino Percent: 10%

### Illinois Population by Race/Latino, Age and Citizenship

	Total	Of Voting- Age	Citizen and of Voting Age
Total	100%	100%	100%
Asian NL	5%	6%	4%
Black NL	14%	14%	15%
Latino	17%	15%	11%
White NL	62%	65%	69%
Other NL	1%	1%	2%

Source: 2014-2018 American Community Survey

# Current Illinois House Districts with Latino Majority when Created



# District Maps

- For 14 current Latino-majority house districts, the following maps include:
  - Current district boundaries
  - “Updated” district boundaries with minor modifications of the boundaries to increase the Latino share of population
  - “Max” district boundaries that maximize Latino representation without regard to existing boundaries
- Maps are accompanied by detailed population tables.

O'Hare, Waukegan, Aurora and Elgin Areas



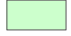


**Suburban Current and Potential  
Latino-Majority State House Districts**

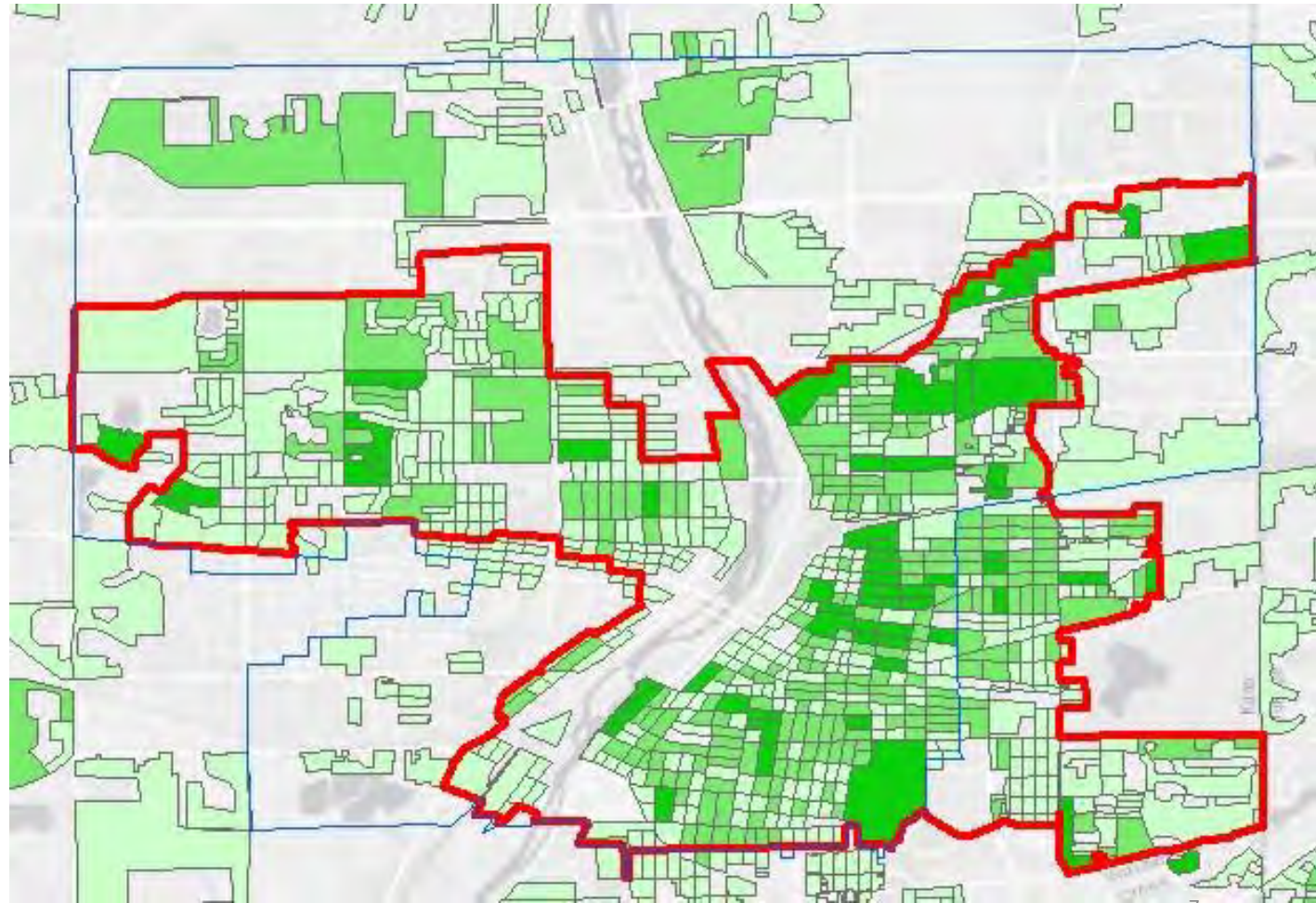
	Total Population	Total Latino	VAP	Lat VAP	CVAP	Lat CVAP	Latino % of Voting Age Pop.	Latino % of Citizen Voting Age Pop.	
<b>O'Hare Area</b>									
Current	108,386	66,026	80,339	43,473	61,140	26,857	61%	54%	44%
Updated	108,914	66,614	80,723	43,842	61,468	27,038	61%	54%	44%
Max Lat	109,789	69,384	80,875	45,368	60,448	27,384	63%	56%	45%
<b>Waukegan Area</b>									
Current	107,933	58,578	77,572	37,156	57,423	19,118	54%	48%	33%
Updated	Same as Max								
Max Lat	108,822	61,871	78,080	39,065	56,959	19,888	57%	50%	35%
<b>Aurora Area</b>									
Current	110,816	66,182	79,169	42,480	60,179	24,767	60%	54%	41%
Updated	108,897	65,961	77,615	42,322	58,826	24,667	61%	55%	42%
Max Lat	108,989	72,865	76,097	46,605	54,617	26,042	67%	61%	48%
<b>Elgin Area</b>									
Current	108,918	62,675	78,113	40,266	59,186	21,886	58%	52%	37%
Updated	Same as Current								10
Max Lat	108,989	63,809	78,256	41,021	59,454	22,297	59%	52%	38%



# Aurora Area: Current and “Max” Districts



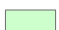


“Max” refers to districts drawn to maximize Latino inclusion.

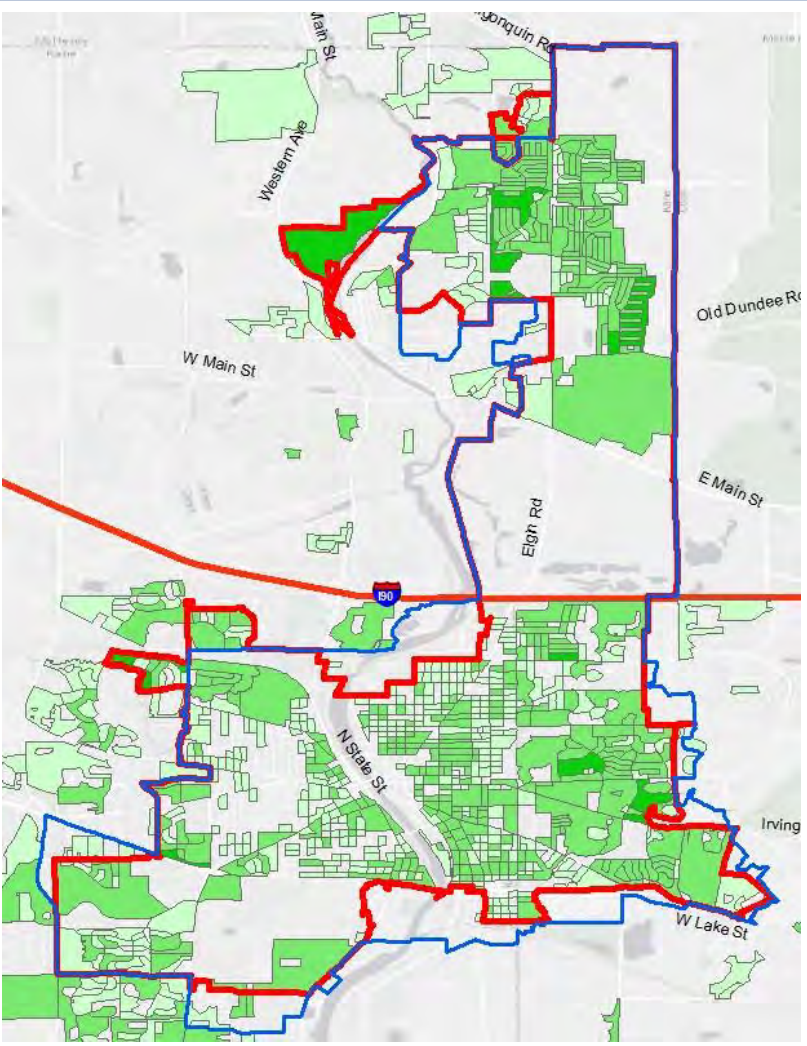
-  Current House District 83
-  “Max” District
- Latino Pop. (est.)**
-  28 - 100
-  101 - 200
-  201 - 487



**Elgin Area:  
Current and “Max” Districts**

“Max” refers to districts drawn to maximize Latino inclusion.


-  Current House District 83
-  “Max” District
- Latino Pop. (est.)**
-  25 - 58
-  59 - 325
-  326 - 1269





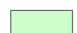
## Waukegan Area: Current and "Max" Districts

"Max" refers to districts drawn to maximize Latino inclusion.


 Current House District 60

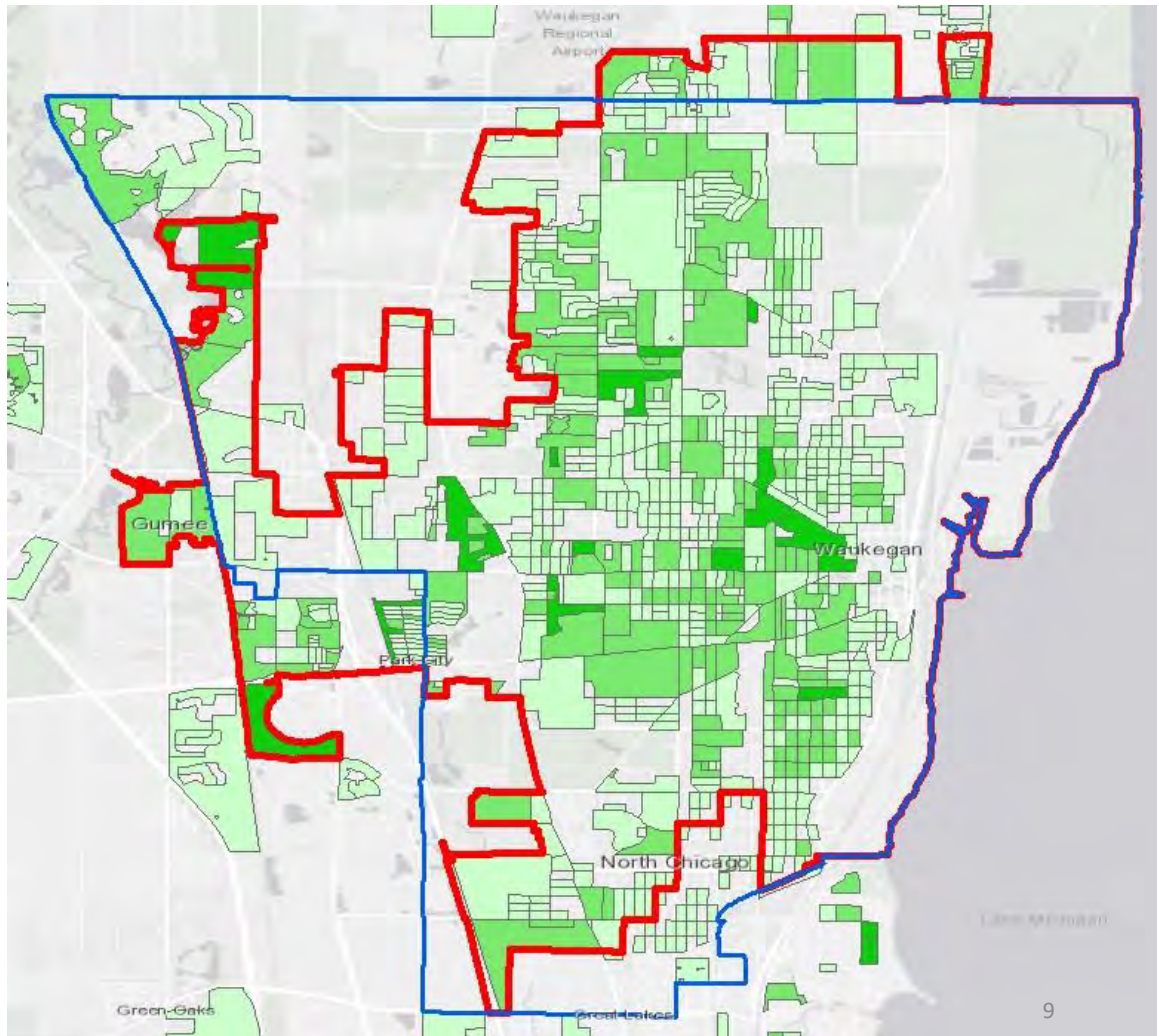
 "Max" District

**Latino Pop. (est.)**

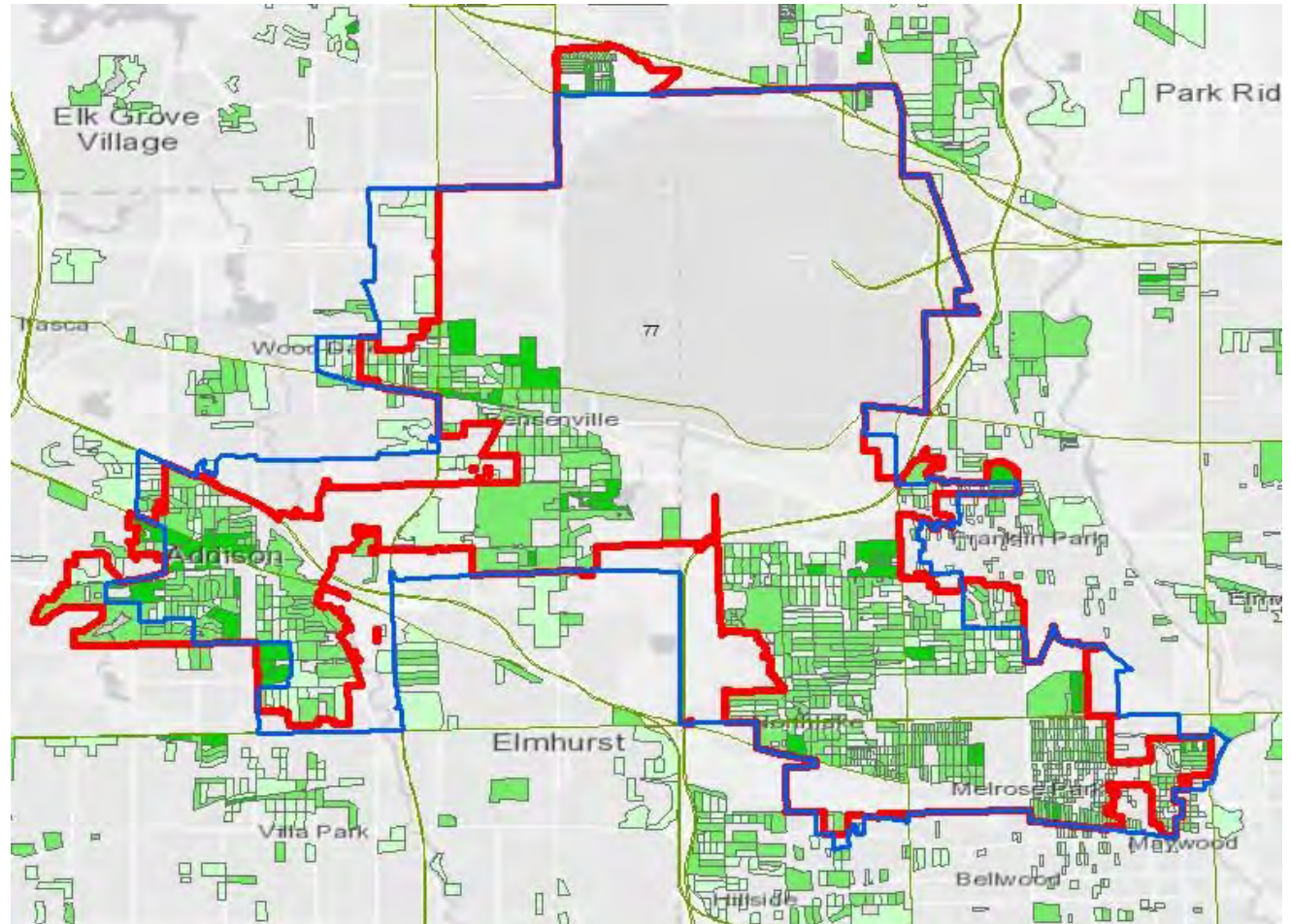
 25 - 99

 100 - 270



 271 - 655



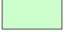


## O'Hare Area: Current and "Max" Districts



"Max" refers to districts drawn to maximize Latino inclusion.

 Current House 77  
 "Max" District

Latino Pop. (est.)

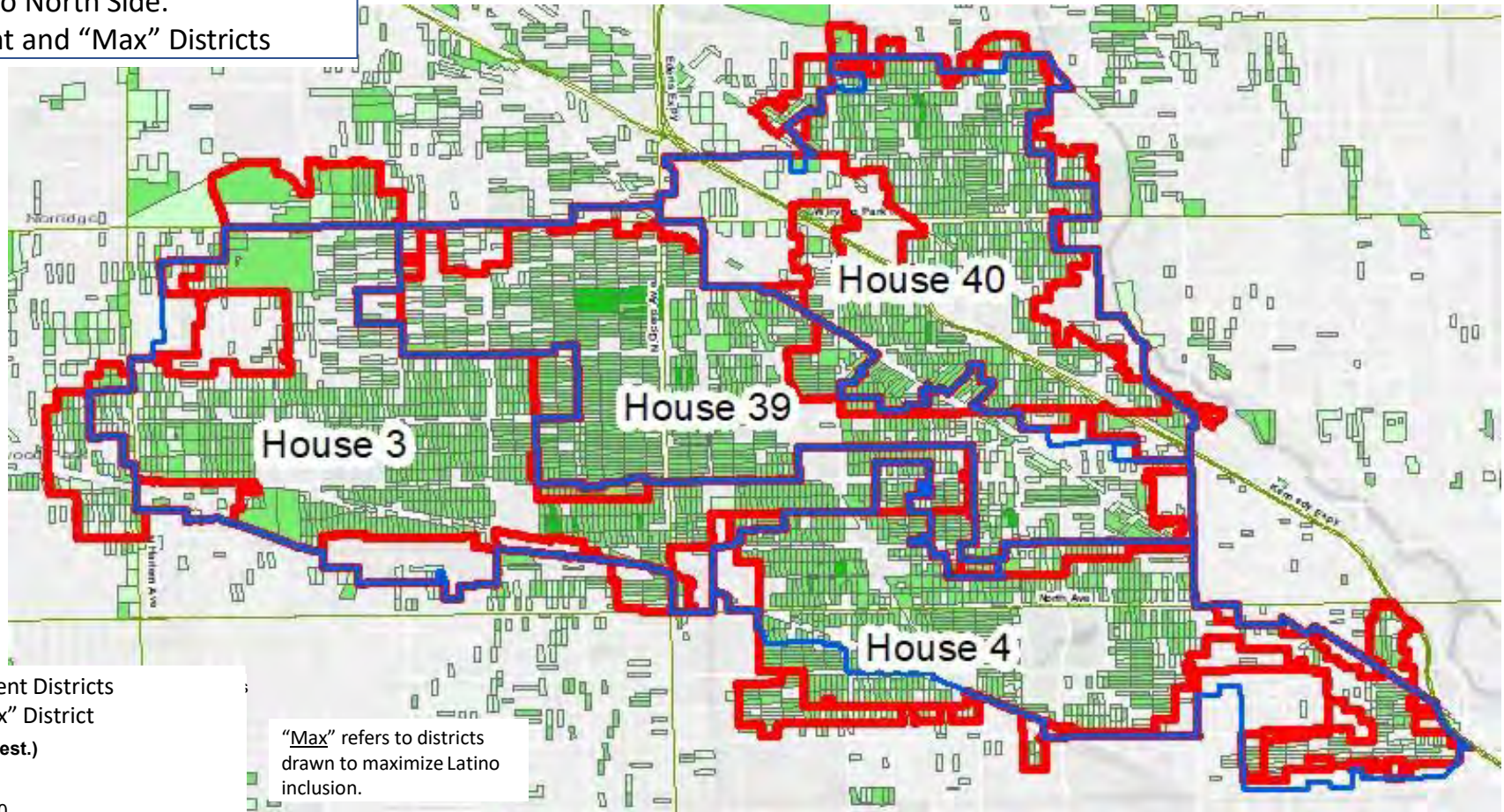
 25 - 40  
 41 - 200  
 201 - 995

**Chicago City North, Current and Potential  
Latino-Majority State House Districts**

	Total Population	Total Latino	Latino %	Latino % of Voting Age Pop.	Latino % of Citizen Voting Age Pop.
<b>House 3</b>					
Current	109,417	75,455	69%	64%	59%
Updated	108,636	75,276	69%	65%	59%
MaxLat	108,992	73,493	67%	63%	57%
<b>House 4</b>					
Current	107,020	52,009	49%	45%	39%
Updated	108,677	56,735	52%	48%	42%
MaxLat	109,198	59,198	54%	50%	44%
<b>House 39</b>					
Current	107,215	63,022	59%	54%	48%
Updated	108,622	63,274	58%	53%	47%
MaxLat	108,343	64,219	59%	54%	48%
<b>House 40</b>					
Current	107,918	52,781	49%	45%	36%
Updated	108,682	56,735	52%	48%	36%
MaxLat	109,638	57,676	53%	49%	39%



Chicago North Side:  
Current and "Max" Districts



**South Chicago/South Cook Current and Potential  
Latino-Majority State House Districts**

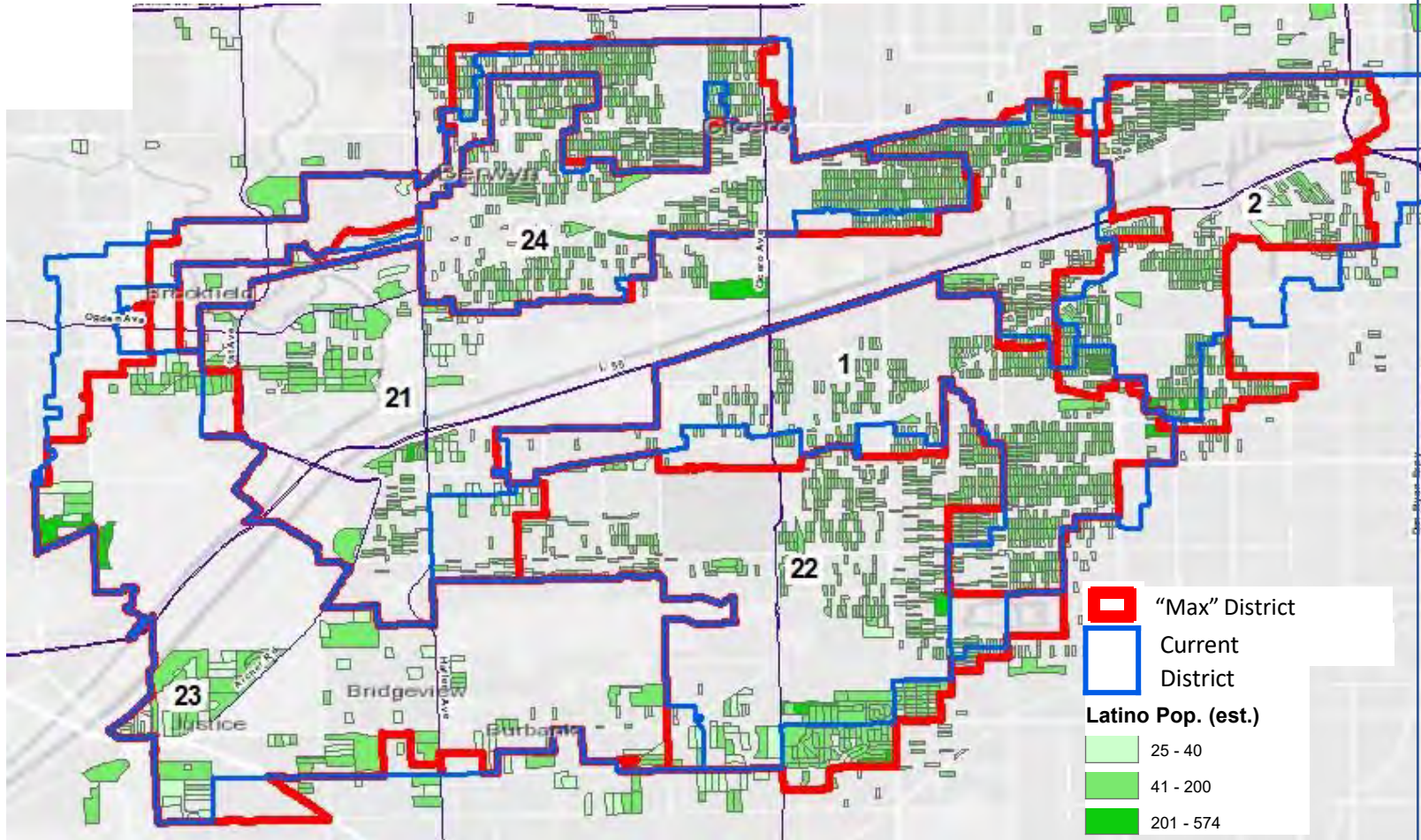
	Total Population	Total Latino	Latino %	Latino % of Voting Age Pop.	Latino % of Citizen Voting Age Pop.
<b>House 1</b>					
Current	106,363	81,928	77%	72%	63%
Updated	109,493	84,397	77%	72%	62%
Max Lat6	108,869	83,106	76%	71%	62%
<b>House 2</b>					
Current	106,642	55,905	52%	49%	45%
Updated	109,314	69,369	63%	59%	53%
Max Lat6	108,382	71,912	66%	62%	55%
<b>House 21</b>					
Current	105,903	73,585	69%	64%	53%
Updated	108,596	73,942	68%	62%	52%
Max Lat6	108,578	71,555	66%	60%	50%
<b>House 22</b>					
Current	112,327	80,876	72%	66%	60%
Updated	109,784	79,992	73%	67%	61%
Max Lat6	108,971	79,553	73%	67%	60%
<b>House 23</b>					
Current	108,196	60,613	56%	52%	44%
Updated	109,326	61,727	56%	52%	44%
Max Lat6	108,870	64,037	59%	55%	47%
<b>House 24</b>					
Current	107,243	83,599	78%	74%	65%
Updated	108,567	84,194	78%	74%	64%
Max Lat6	108,775	86,936	80%	76%	67%
<b>Seven New Districts*</b>					
Max Lat7	108,806	61,122	56%	51%	45%
Max Lat7	109,283	86,977	80%	76%	67%
Max Lat7	108,576	63,805	59%	53%	43%
Max Lat7	109,174	58,682	54%	49%	43%
Max Lat7	109,544	79,112	72%	66%	58%
Max Lat7	108,568	72,871	67%	63%	53%
Max Lat7	108,751	64,864	60%	55%	47%

\*These 7 districts do not closely correspond to the existing six districts because borders shifted substantially in the process of creating them.

Chicago City South and  
South Cook County



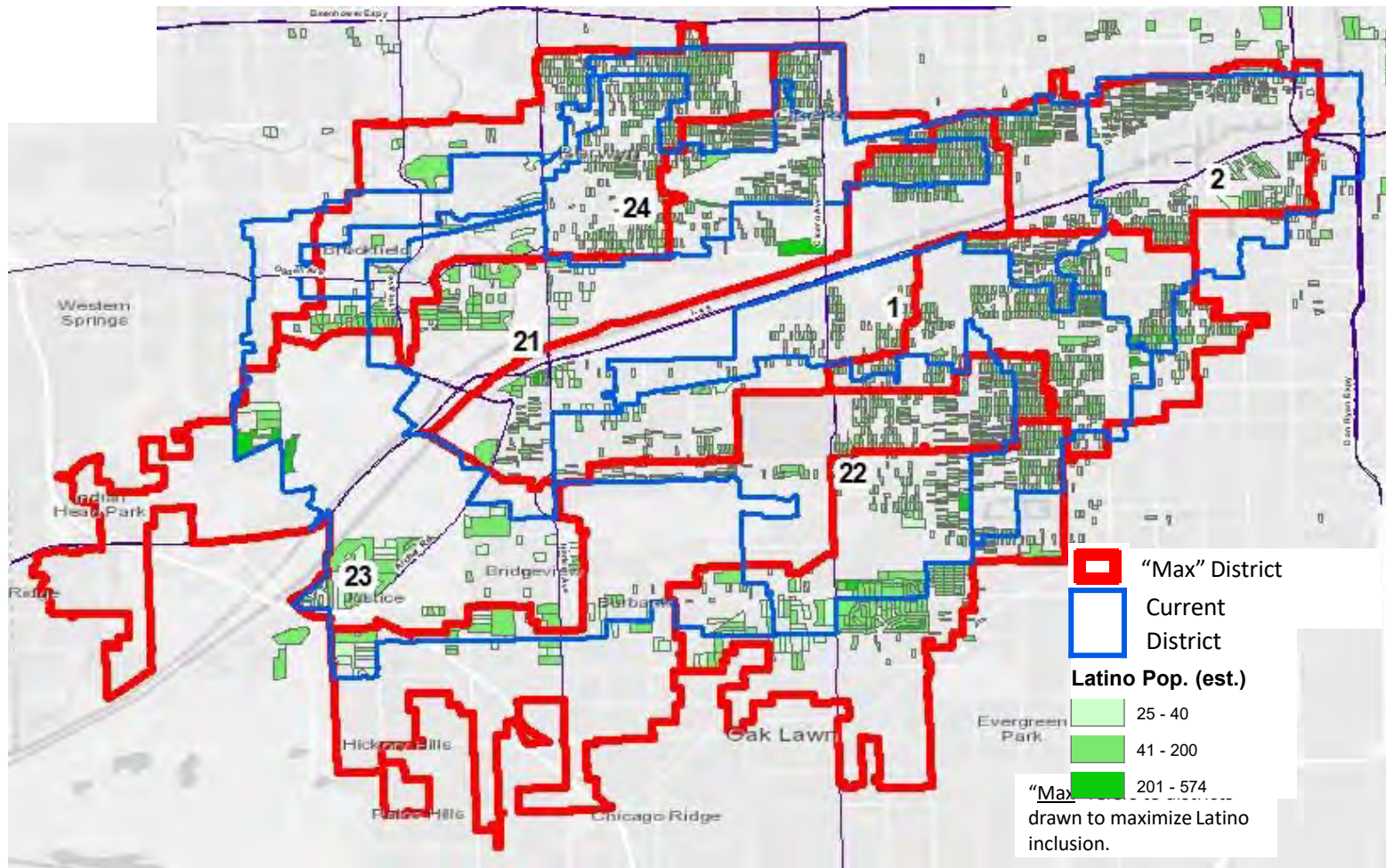
**Chicago South Side:  
Current and 6 “Max”  
Districts**



“Max” refers to districts drawn to maximize Latino inclusion.

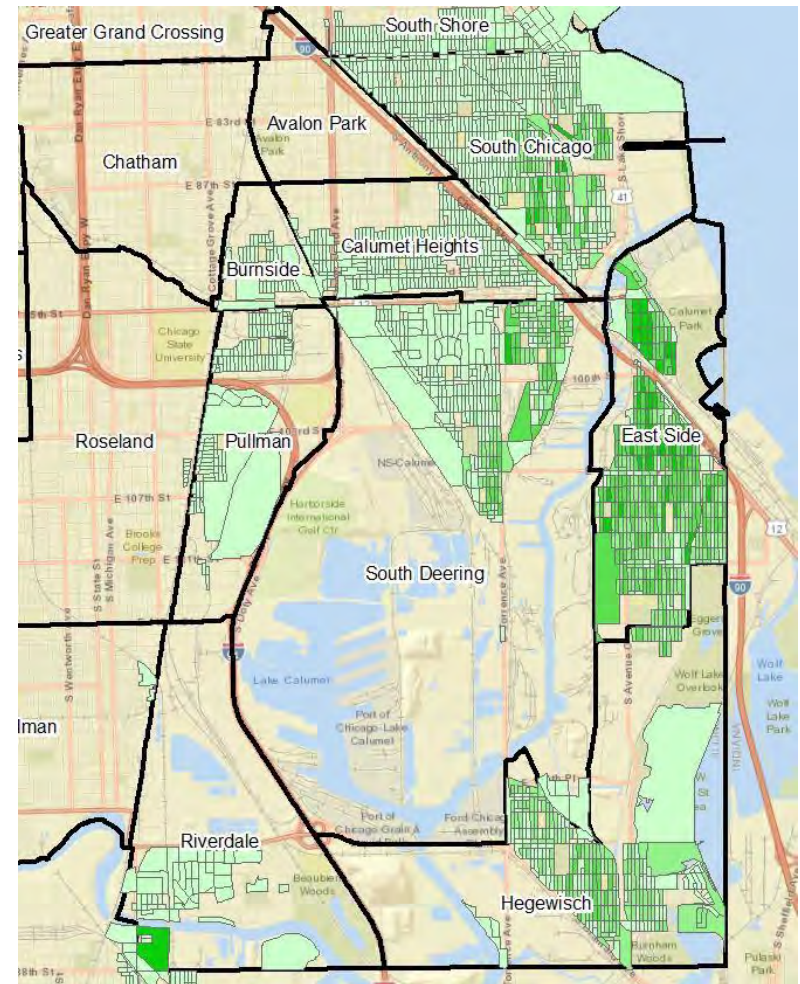


Chicago South  
Side: Current and 7  
"Max" Districts



## Southeast Side Population

- 36,430 Latinos of 112,526 total
- 32% Latino

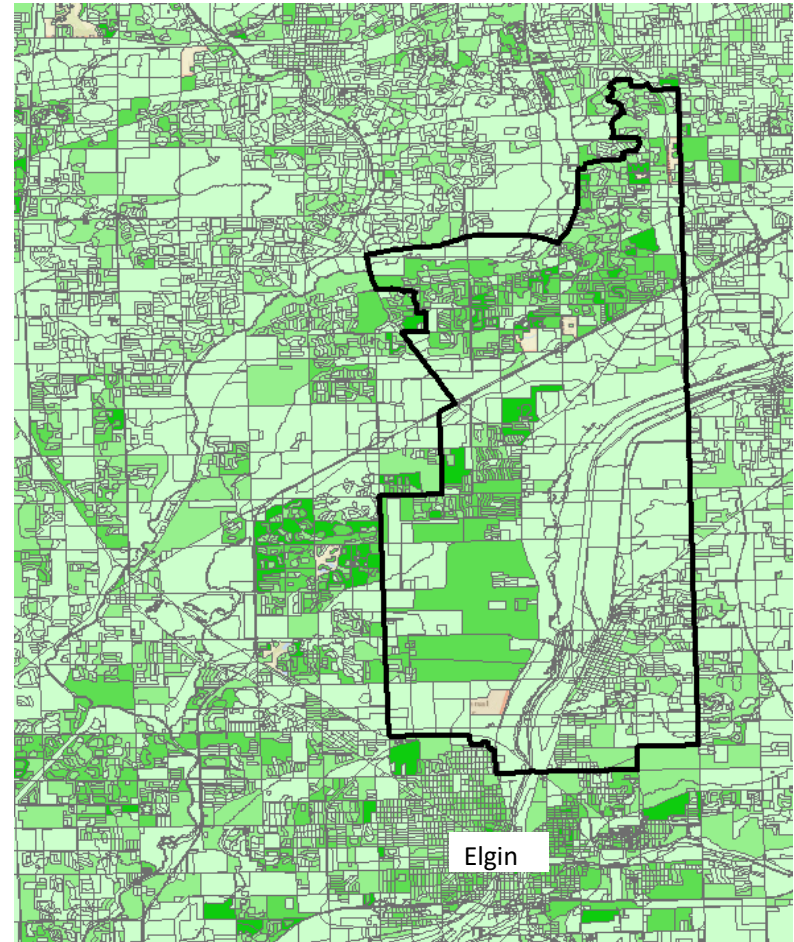
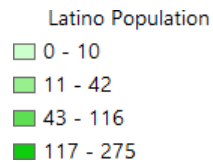


## House 85

(Current Rep. Dagmara Avelar)  
Elgin area

Current district 85  
Total: ~108,000  
Latinos: ~27,000  
Latino pct.: 25%

Population in larger area seen  
on map:  
Total: 490,000  
Latinos: 90,000  
Latino pct.: ~18%





## House 44

(Current Rep. Fred Crespo),  
Streamwood, Hoffman  
Estates, Hanover Park area

Current district 44

Total: ~110,000

Latinos: ~34,000

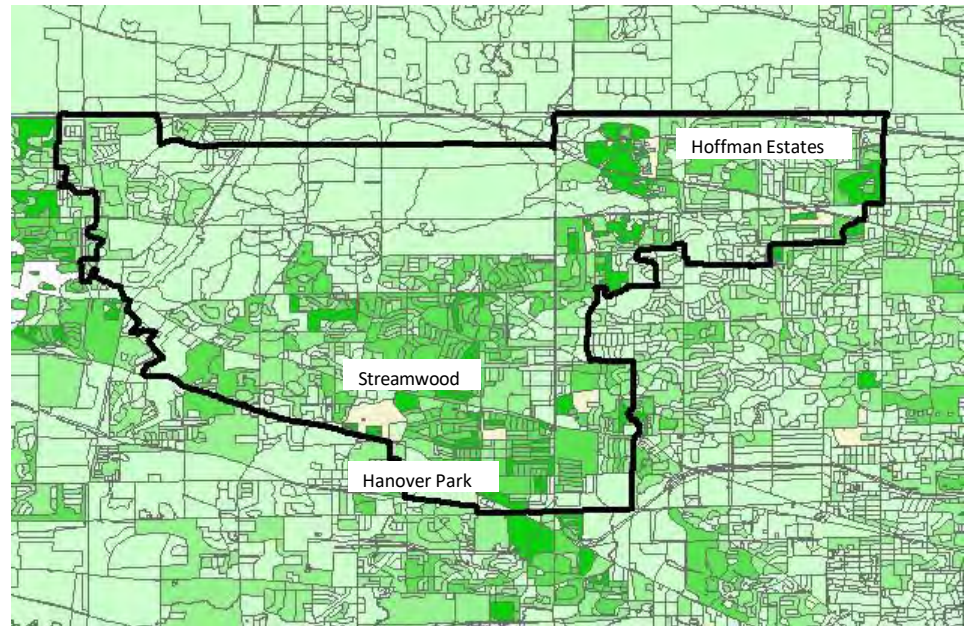
Latino pct.: 31%

Population in larger area seen  
on map:

Total: 253,00

Latinos: 58,000

Latino pct.: ~23%



Latino Population

0 - 10

11 - 42

43 - 116

117 - 275



# Latino Population by Metro Area in Illinois

Region	Total Population	Latino Population	% Latino
Chicago-Naperville-Elgin, IL-IN-WI Metro Area	9,508,605	2,103,096	22%
Rockford, IL Metro Area	338,356	48,044	14%
Sterling, IL Micro Area	56,016	6,723	12%
Kankakee, IL Metro Area	110,637	11,504	10%
Rochelle, IL Micro Area	51,025	5,166	10%
Ottawa, IL Micro Area	148,580	14,007	9%
Champaign-Urbana, IL Metro Area	226,323	12,740	6%



# Illinois Population by Data by Race/Ethnicity, 2010, 2019

<i>Race/Ethnicity</i>	<i>Number of People 2010</i>	<i>Percent of Total Population 2010</i>	<i>Number of People 2019</i>	<i>Percent of Total Population 2019</i>	<i>Numeric Change 2010 to 2019</i>	<i>Percent Change 2010 to 2019</i>
Asian	580,586	4.5	738,666	5.9	158,080	27.2
Black	1,832,924	14.3	1,850,086	14.6	17,162	0.9
<b>Latino</b>	<b>2,027,578</b>	<b>15.8</b>	<b>2,217,569</b>	<b>17.5</b>	<b>189,991</b>	<b>9.3</b>
White	8,167,753	63.7	7,704,467	60.8	-463,286	-5.6
TOTAL	12,830,632	98.3	12,671,821	98.8	-158,811	N/A



## About the Authors

The Rob Paral and Associates project team included:

### **Jim Lewis**

Dr. James Lewis worked with members of the Chicago City Council, Cook County Board and Illinois congressional delegation on remap proposals during the 1990s. He provided expert testimony in U.S. District Court in 1996 regarding Chicago ward map litigation (Barnett v. City of Chicago) and was a fact witness in congressional map litigation in King v. State Board of Elections before the U.S. Court of Appeals in 1995. For more information on his work, see [www.jimonchicago.com](http://www.jimonchicago.com).

### **Rob Paral**

Rob Paral is a demographic and public policy consultant with specialties in immigrant, Latino and Asian populations; community needs for health and human service programs; and Midwestern demographic change.

As principal of Rob Paral and Associates, Rob has assisted more than 100 human service, advocacy and philanthropic organizations in understanding the communities they are trying to serve. He works with large-scale data and geographic information systems to develop insight into community assets and needs. More information on Rob's work may be found via [www.robparal.com](http://www.robparal.com) and [@robparal](https://twitter.com/robparal).